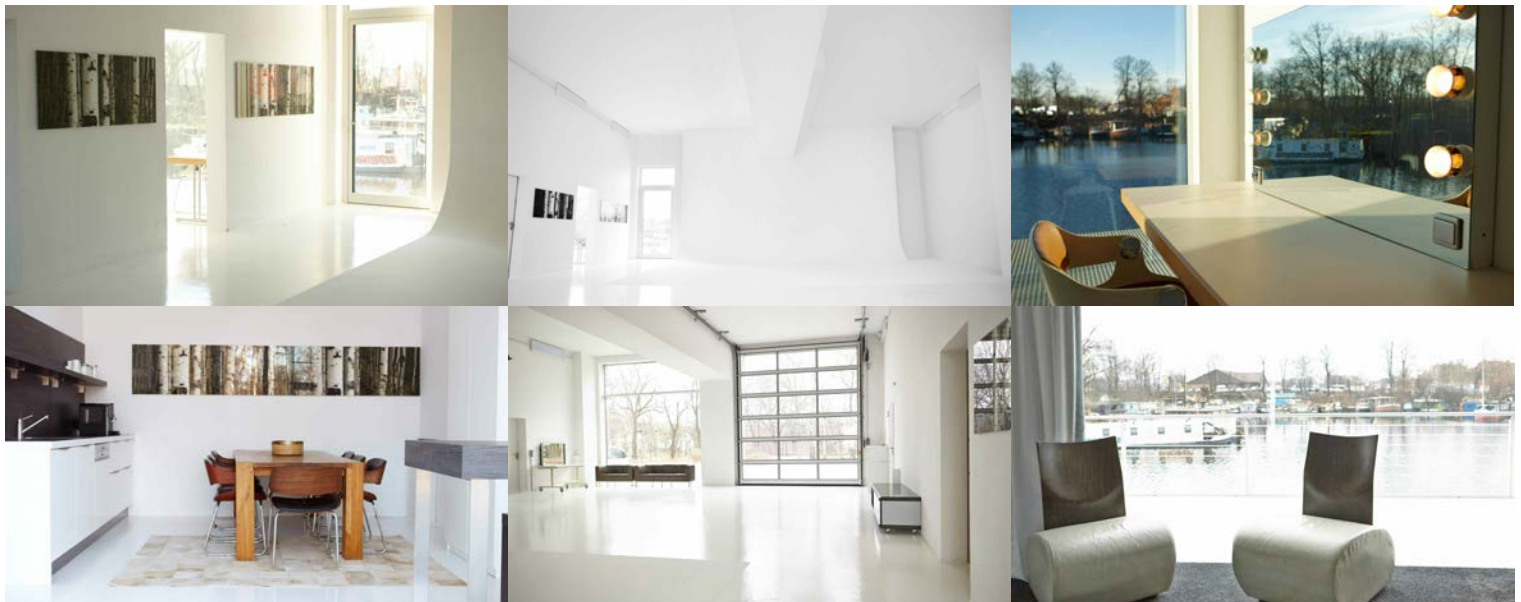
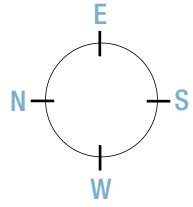


BRIDGE
STUDIOS BERLIN

STUDIO 2
CYCLORAMA / INFINITY

- STUDIO FACTS:** 150 m² Studio, 30 m² 30 m² Styling/Make-up (daylight), 60 m² Terrace, with waterview
30 m² dining area/kitchen, 50 m² fitting room, 300 m² courtyard
- CYCLORAMA/INFINITY:** B 6,5 m x T 7m x H 4,5 m / appr. 70 m²
- CEILING:** 4,5 m height
- SHUTTER DOOR:** 4 m x 3,5 m
- POWER SUPPLY:** 3 x 32 A, 10 x 230 V
- FACILITIES:** Over 4 m high windows on 2 sides, (with seperate sunscreens)
floorheating, W-Lan, sound-system, kitchen, coffeemachine, fridge,
mobile make-up table, cloth racks, professional Ironing station, steamer,
autopoles and foam boards
- PRICE** Only for rent in combination with Studio 1.
DAY FEE/STANDARD: Price day fee for both Studios: 2200,- EURO
- INCLUDED IN STUDIO PRICE:** Shooting hours: 10 h per day / additional shooting time: 10% of daily rate per hour
Electricity (excl. HMI + tungsten light) , hot beverages (tea, coffee) for up to 10 people.
Beyond that 2,50 EURO/person, 5 parking spaces, autopoles and foam boards
- ADDITIONAL SERVICE:** cold beverages 10,00 EURO/person
Studio attendant 180,00 EURO/10 hours
electricity (HMI, Tungsten) EURO 0,40/kWh
final clean-up 50,00 EURO
infinity painting EURO 3,00/m²
-winter only: heating cost 50,00 EURO/day
- UPON REQUEST:** Studio Assistant, set-building,
Props, backgrounds, furniture
Catering, breakfast,
additional lightgear
- Please contact us for rates regarding extended catalogue
productions, events and film and for teams more than 15 people.
All prices excl. VAT
All services are subject to the GTC.



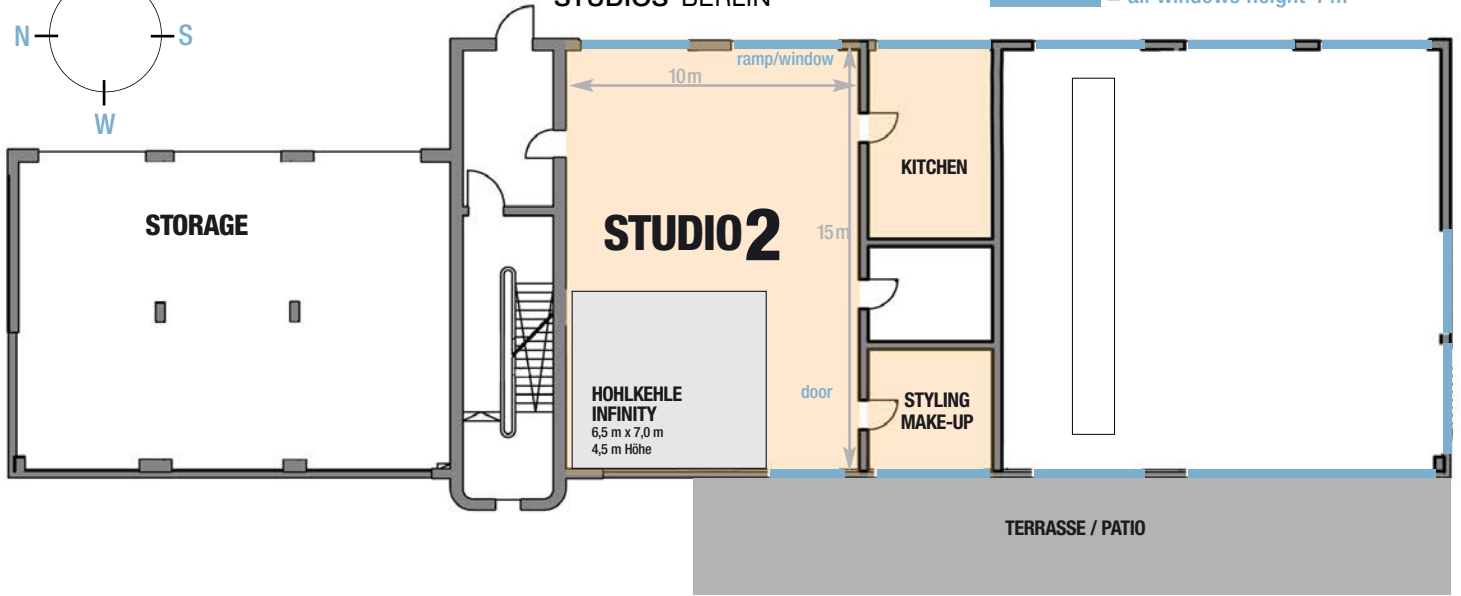


BRIDGE STUDIOS BERLIN

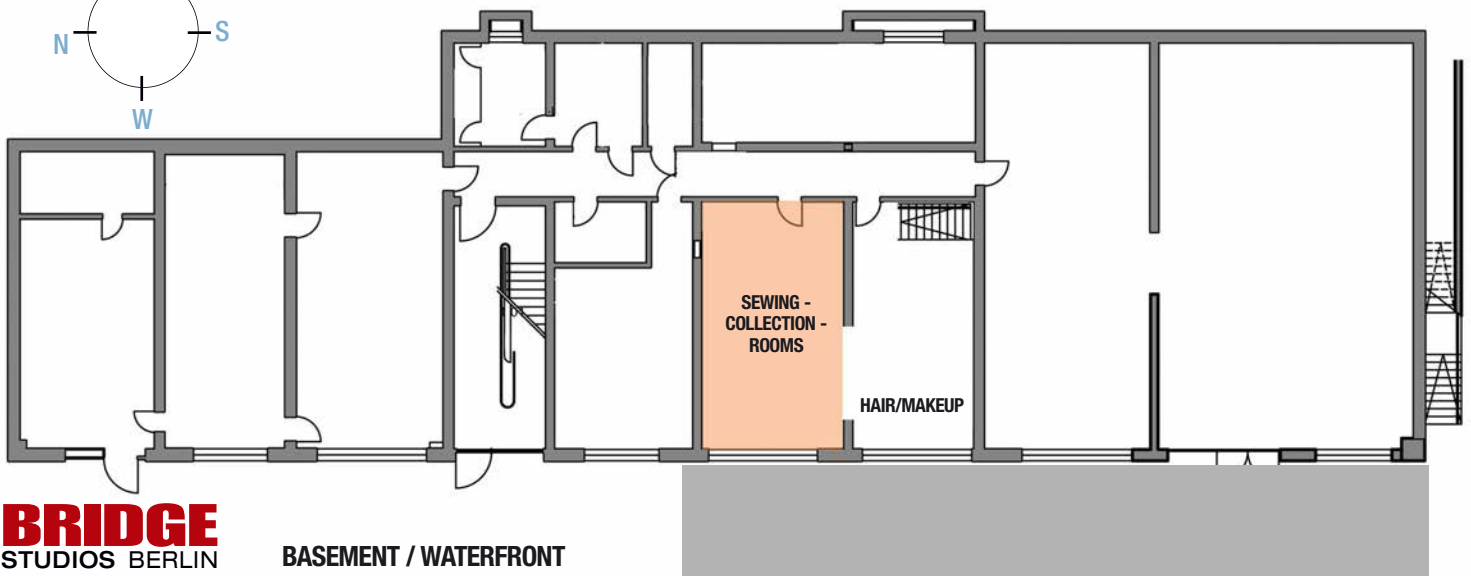
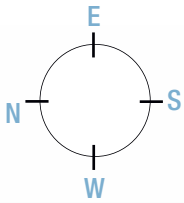
GROUND FLOOR

5 x free of charge parking in front of the studios

= all windows height 4 m



WATERFRONT



BRIDGE STUDIOS BERLIN

BASEMENT / WATERFRONT

WATERFRONT